

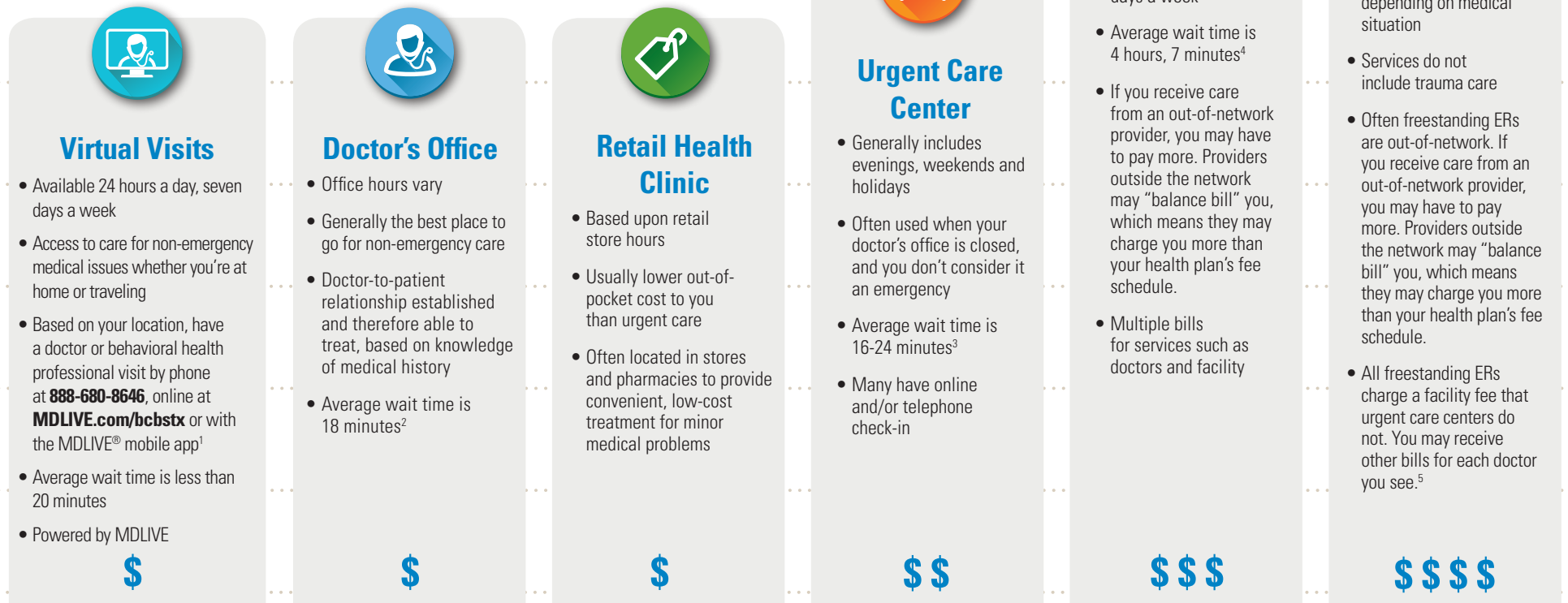
## Confused About Where to Go for Care?

SmartER Care<sup>SM</sup> options may save you money.

If you aren't having an emergency, deciding where to go for medical care may save you time and money.

You have choices for where you get non-emergency care — what we call SmartER Care. Use the chart below to help you figure out when to use each type of care.

When you use in-network providers for your family's health care, you usually pay less for care. Search for in-network providers in your area at [bcbstx.com](http://bcbstx.com) or by calling the Customer Service number on your member ID card.



**If you need emergency care, call 911 or seek help from any doctor or hospital immediately.**

<sup>1</sup> Internet/Wi-Fi connection is needed for computer access. Data charges may apply. Check your cellular data or internet service provider's plan for details. Non-emergency medical service in Idaho, Montana and New Mexico is limited to interactive audio/video (video only), along with the ability to prescribe. Non-emergency medical service in Arkansas is limited to interactive audio/video (video only) for initial consultation, along with the ability to prescribe. Behavioral Health service is limited to interactive audio/video (video only), along with the ability to prescribe in all states. Service availability depends on location at the time of consultation.

<sup>2</sup> Vitals Annual Wait Time Report, 2017.

<sup>3</sup> Wait Time Trends in Urgent Care and Their Impact on Patient Satisfaction, 2017.

<sup>4</sup> Emergency Department Pulse Report 2010 Patient Perspectives on American Health Care. Press Ganey Associates.







<sup>5</sup> The Texas Association of Health Plans.

Note: The relative costs described here are for independently contracted network providers. Your costs for out-of-network providers may be significantly higher. Wait times described are just estimates.

Virtual visits, Powered by MDLIVE may not be available on all plans. Virtual visits are subject to the terms and conditions of your benefit plan, including benefits, limitations, and exclusions. MDLIVE operates subject to state regulations and may not be available in certain states. MDLIVE is not an insurance product or a prescription fulfillment warehouse. MDLIVE does not guarantee that a prescription will be written. MDLIVE does not prescribe DEA-controlled substances, non-therapeutic drugs and certain other drugs that may be harmful because of their potential for abuse. MDLIVE physicians reserve the right to deny care for potential misuse of services.

The information provided in this guide is not intended as medical advice, nor meant to be a substitute for the individual medical judgment of a doctor or other health care professional. Please check with your doctor for individualized advice on the information provided. Coverage may vary depending on your specific benefit plan and use of network providers. For questions, please call the number on the back of your member ID card.

# Deciding Where to Go? Virtual Visit, Doctor's Office, Retail Clinic, Urgent Care or ER.

	Virtual Visits powered by MDLIVE	Doctor's Office	Retail Health Clinic	Urgent Care Center	Hospital ER	Freestanding ER
						
Who usually provides care	Primary Care Pediatrics, Family and Emergency Medicine Doctors	Primary Care Doctor	Physician Assistant or Nurse Practitioner	Internal Medicine, Family Practice and Pediatric	ER Doctors, Internal Medicine, Specialists	ER Doctors
Sprains, strains		■	■	■	<ul style="list-style-type: none"> <li>Any life-threatening or disabling conditions</li> <li>Sudden or unexplained loss of consciousness</li> <li>Major injuries</li> <li>Chest pain; numbness in the face, arm or leg; difficulty speaking</li> <li>Severe shortness of breath</li> <li>High fever with stiff neck, mental confusion or difficulty breathing</li> <li>Coughing up or vomiting blood</li> <li>Cut or wound that won't stop bleeding</li> <li>Possible broken bones</li> </ul>	<ul style="list-style-type: none"> <li>Most major injuries except for trauma<sup>1</sup></li> <li>May also provide imaging and lab services but do not offer trauma or cardiac services requiring catheterization<sup>1</sup></li> <li>Do not always accept ambulances</li> </ul>
Animal bites		■	■	■		
X-rays				■		
Stitches				■		
Mild asthma	■	■	■	■		
Minor headaches	■	■	■	■		
Back pain		■	■	■		
Nausea, vomiting, diarrhea	■	■	■	■		
Minor allergic reactions	■	■	■	■		
Coughs, sore throat	■	■	■	■		
Bumps, cuts, scrapes	■	■	■	■		
Rashes, minor burns	■	■	■	■		
Minor fevers, colds	■	■	■	■		
Ear or sinus pain	■	■	■	■		
Burning with urination	■	■	■	■		
Eye swelling, irritation, redness or pain	■	■	■	■		
Vaccinations		■	■	■		

## 24/7 Nurseline<sup>2</sup>

The 24/7 Nurseline can help you identify some options when you or a family member have a health problem or concern. Nurses are available at **800-581-0393**, 24 hours a day, seven days a week, to answer your health questions.

## Urgent Care Center or Freestanding ER Knowing the Difference Can Save You Money

Urgent care centers and freestanding ERs can be hard to tell apart. Freestanding ERs often look a lot like urgent care centers, but costs may be higher. A visit to a freestanding ER often results in medical bills that may be 10 times the rate charged by urgent care centers for the same services.<sup>3</sup> Here are some ways to know if you are at a freestanding ER.

### Freestanding ERs:

- Look like urgent care centers, but have the word "Emergency" in their name or on the building.
- Are open 24 hours a day, seven days a week.
- Are not attached to and may not be affiliated with a hospital.
- Are subject to the same ER member share which may include a copay, coinsurance and applicable deductible.

Find urgent care centers<sup>4</sup> near you by texting<sup>5</sup>

**URGENTTX** to **33633**.

<sup>1</sup> "Freestanding ED 101: What you need to know" July 2016, The Advisory Board Company.

<sup>2</sup> 24/7 Nurseline is not a substitute for a doctor's care. Talk to your doctor about any health questions or concerns.

<sup>3</sup> Freestanding ERs: The Need for Greater Transparency and More Consumer Protections. (2016). The Texas Association of Health Plans.

<sup>4</sup> The closest urgent care center may not be in your network. Be sure to check Provider Finder<sup>®</sup> to make sure the center you go to is in-network.

<sup>5</sup> Message and data rates may apply. Read terms, conditions and privacy policy at [bcbstx.com/mobile/text-messaging](http://bcbstx.com/mobile/text-messaging).

Blue Cross and Blue Shield of Texas, a Division of Health Care Service Corporation, a Mutual Legal Reserve Company, an Independent Licensee of the Blue Cross and Blue Shield Association

Blue Cross<sup>®</sup>, Blue Shield<sup>®</sup> and the Cross and Shield Symbols are registered service marks of the Blue Cross and Blue Shield Association, an association of independent Blue Cross and Blue Shield Plans.

MDLIVE, an independent company, provides virtual visit services for Blue Cross and Blue Shield of Texas. MDLIVE operates and administers the virtual visit program and is solely responsible for its operations and that of its contracted providers.

MDLIVE and the MDLIVE logo are registered trademarks of MDLIVE, Inc. and may not be used without written permission.